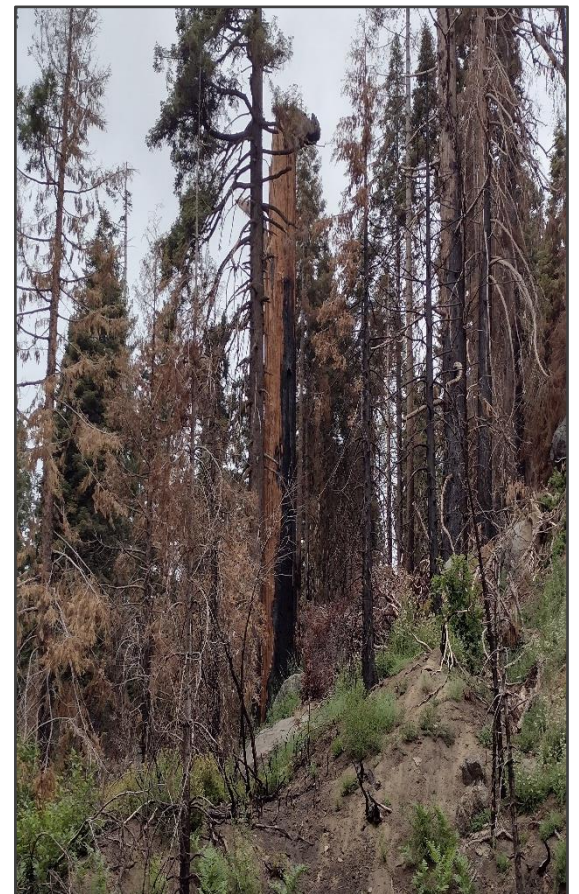


54563 Ponderosa Dr.  
Sequoia Crest 0.347 Acre Lot

\$27,000



Deborah Morley, REALTOR®  
CalDRE Lic. 02085898  
[Deborah.Morley@gmail.com](mailto:Deborah.Morley@gmail.com)  
559.429.5142



## Features

Roughed-in driveway and building pad  
Water, electricity, and cable TV/Internet available at the street  
Lot backs up to private land so there are no cabins behind you

## Details

Lot Size: 0.347 acres  
Approximate Dimensions: 121 ft by 131 ft

*View Giant  
Sequoias from your  
lot!*

Build a cabin among the Giant Sequoias! This buildable lot is one of the very few available lots in Sequoia Crest, a primarily vacation home subdivision located in a private Giant Sequoia grove within the Giant Sequoia National Monument. It has a roughed-in driveway and cabin clearing, and, although the Castle Fire burned many of the trees on the property, it still has views of Giant Sequoias in nearly all directions. With water, electricity, and cable TV/Internet available at the street, it's ready for you!

For questions or to see this lot, contact Debbie at **559-429-5142** or [Deborah.Morley@gmail.com](mailto:Deborah.Morley@gmail.com)

Visit [GiantSequoiaCabins.com](http://GiantSequoiaCabins.com) for lots more photos of and info about this lot, as well as photos of and information about all of the mountain communities, the things to do and see there, and other cabins for sale.



Disclaimer: Lot size has not been verified by agent.

