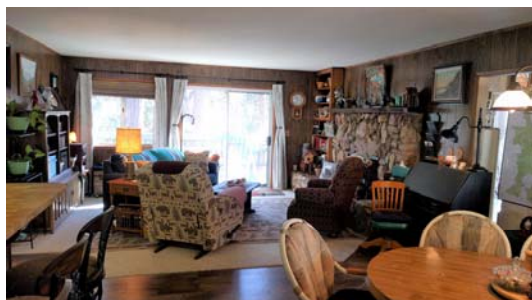


386 John Lewis Dr  
Pierpoint Springs

\$249,5000



Deborah Morley, REALTOR®  
CalDRE Lic. 02085898  
[Deborah.Morley@gmail.com](mailto:Deborah.Morley@gmail.com)  
559.429.5142



## Features

- Open floor plan
- Bonus room with beamed ceilings and bay window
- Large kitchen with breakfast bar and step-in pantry
- Master suite with a private bath and slider to the back deck
- Recent fixtures and appliances
- Recent vinyl plank flooring
- Rock fireplace
- Dual-pane windows
- Recent roof, exterior paint, and decking
- Two-car garage plus shop
- Private setting with some views of Slate Mountain
- Cul-de-sac lot



## Details

2 Beds | 2 Baths | 1,514 Sq Ft  
Year Built: 1978  
Lot Size: 0.418 acres

*Enjoy the mountain  
views from your own  
private cabin!!*

Want to get away from it all? This well-maintained cabin in Upper Pierpoint could be just what you are looking for! Two bedrooms plus a bonus room, two baths, and an open floor plan give you plenty of room for family and friends. A paved driveway and two-car garage add convenience for full-time or vacation living, and the rock fireplace, back deck, and views of Slate Mountain leave no doubt you are in a mountain cabin. This one is not going to last – call today to see it before it's gone!

For questions or to see this cabin, contact Debbie at **559-429-5142** or [Deborah.Morley@gmail.com](mailto:Deborah.Morley@gmail.com)

Visit [GiantSequoiaCabins.com](http://GiantSequoiaCabins.com) for lots more photos of and info about this cabin, as well as photos of and information about all of the mountain communities, the things to do and see there, and other cabins for sale.



Disclaimer: Lot size and square footage has not been verified by agent.

